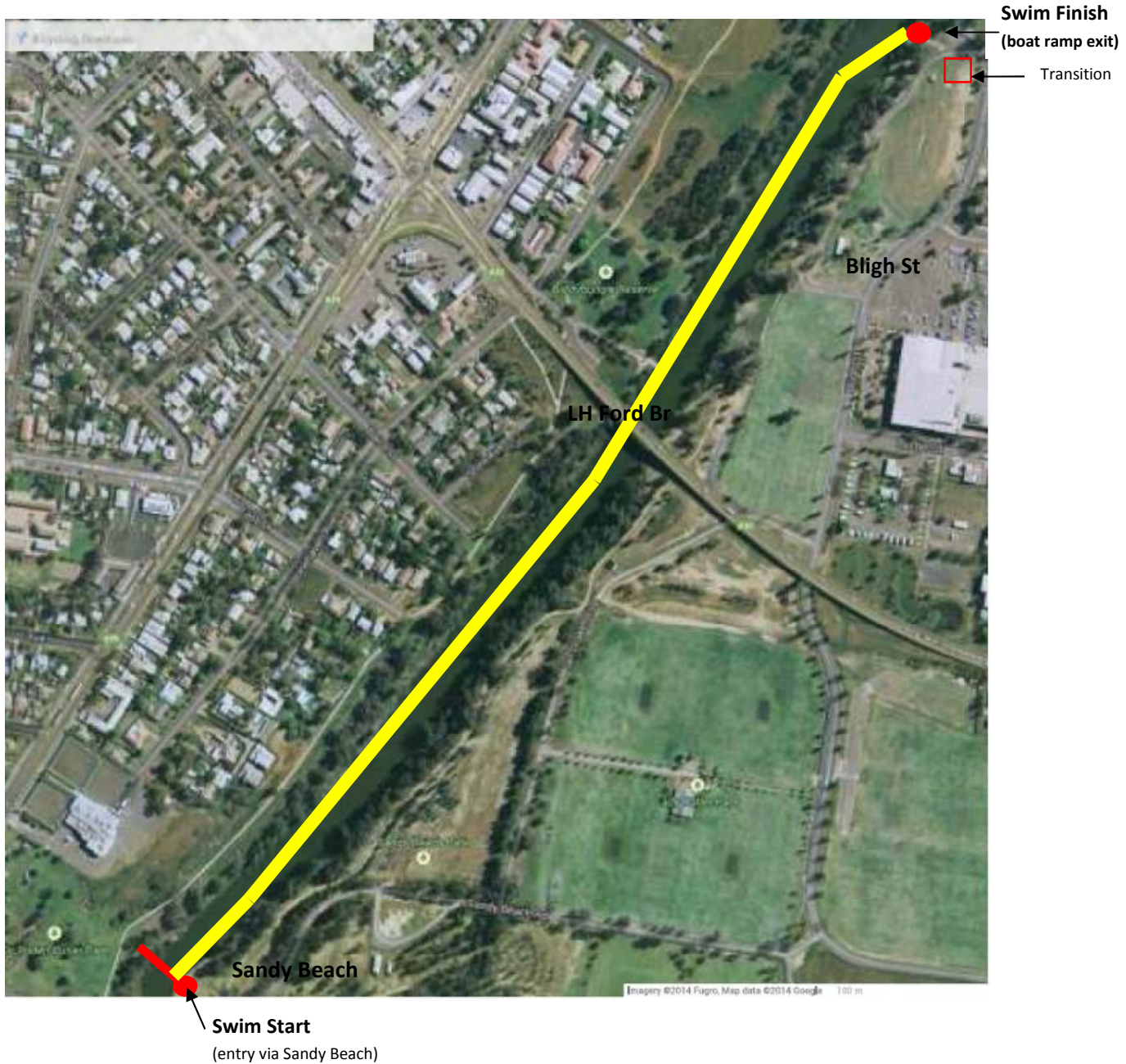




COURSE MAP

2014/15 RACE SEASON

SWIM COURSE – OLYMPIC DISTANCE (approx. 1500m)



Notes:

- * Race director to conduct pre-race safety inspection of the course
- * Competitors and marshalls walk together to start line following race participant's briefing
- * Start at Sandy Beach, shore marshalls to be present at start and 500m intervals
- * Number of waves dependent on number of competitors and handicap if applicable
- * Swim safety team to include minimum of 2 paddle craft and 2 on-shore spotters (right bank)
- * Exit via boat ramp to transition area at Ollie Robbins Oval