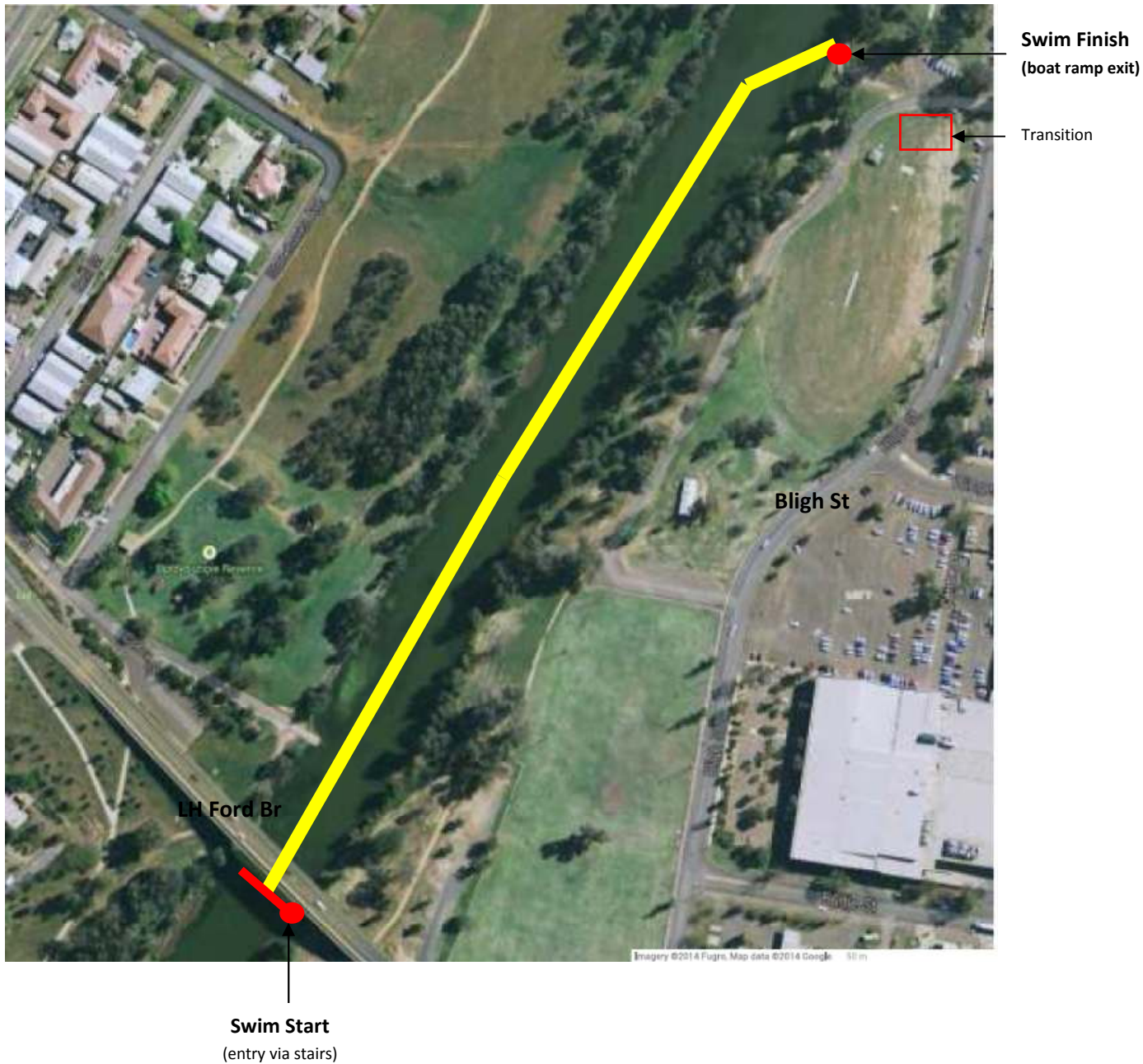




COURSE MAP

2014/15 RACE SEASON

SWIM COURSE – SPRINT DISTANCE AND SHORT COURSE (500m)



Notes:

- * Race director to conduct pre-race safety inspection of the course
- * Competitors and marshalls walk together to start line following race participant's briefing
- * Start at steps under LH Ford Bridge, shore marshall to be present on either side of river
- * Number of waves dependent on number of competitors and handicap if applicable
- * Swim safety team to include minimum of 2 paddle craft and 1 on-shore spotter (right bank)
- * Exit via boat ramp to transition area at Ollie Robbins Oval