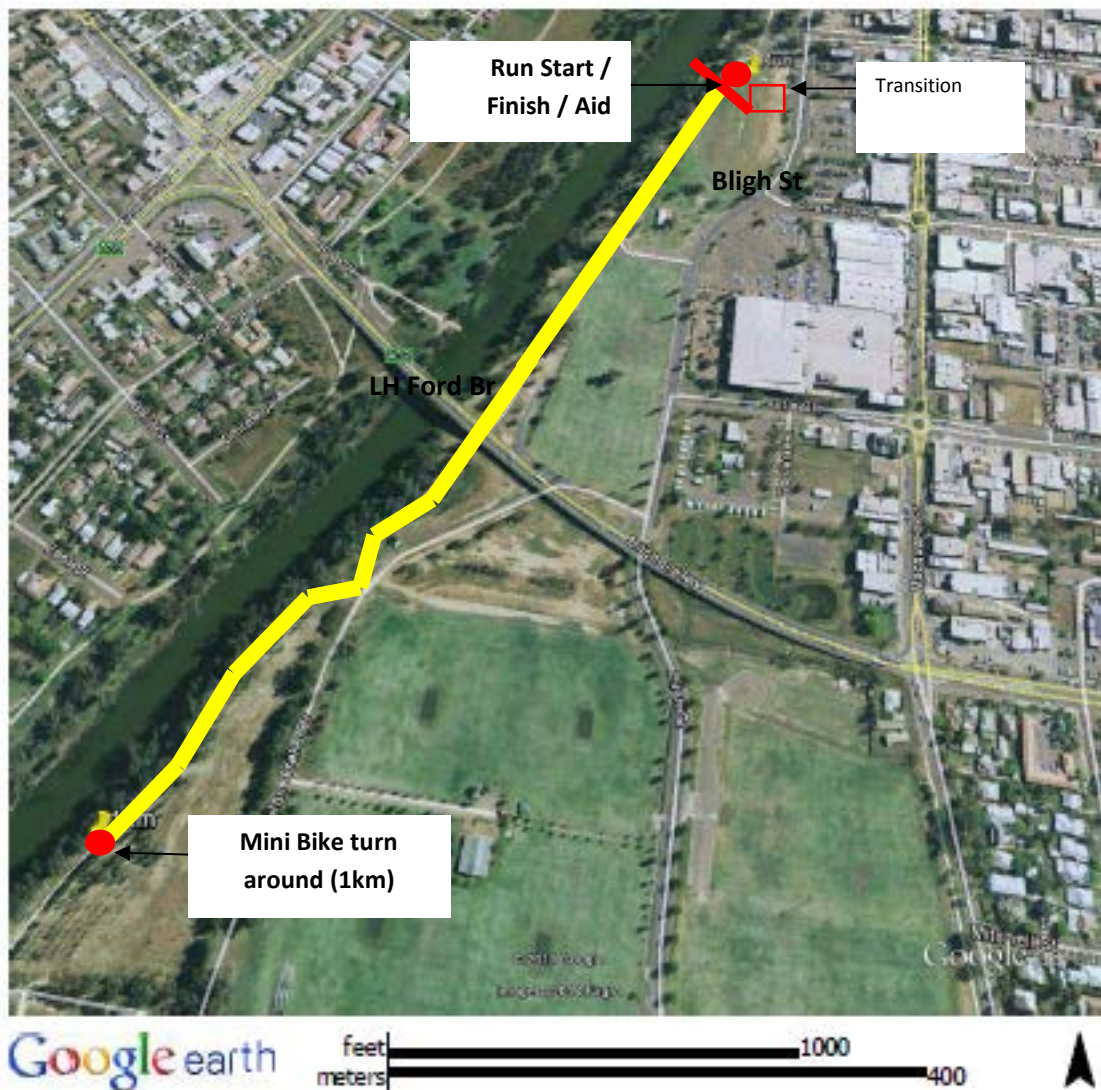




MINI BIKE COURSE MAP

2018/19 RACE SEASON

BIKE (Off-road) COURSE – MINI (2km),



Notes:

- * Race director to conduct pre-race safety inspection of the course and participant's briefing
- * course is out and back on mixture of bitumen and gravel surfaces
- * * Run start and finish adjacent to transition area at Ollie Robbins Oval
- * Drink and aid station is adjacent to start / finish line